

**(Mouse) Epcam Antibody (C-term)**  
**Purified Rabbit Polyclonal Antibody (Pab)**  
**Catalog # AW5495**

**Specification**

---

**(Mouse) Epcam Antibody (C-term) - Product Information**

Application	FC, WB,E
Primary Accession	<a href="#">O99JW5</a>
Reactivity	Human, Mouse
Host	Rabbit
Clonality	Polyclonal
Calculated MW	M=35;H=35;R=35 KDa
Isotype	Rabbit IgG
Antigen Source	HUMAN

**(Mouse) Epcam Antibody (C-term) - Additional Information**

**Gene ID** 17075

**Antigen Region**  
302-335

**Other Names**

Epithelial cell adhesion molecule, Ep-CAM, Epithelial glycoprotein 314, EGP314, mEGP314, Protein 289A, Tumor-associated calcium signal transducer 1, CD326, Epcam, Tacstd1

**Dilution**

FC~~1:25  
WB~~1:1000

**Target/Specificity**

This Mouse Epcam antibody is generated from a rabbit immunized with a KLH conjugated synthetic peptide between 302-335 amino acids from the C-terminal region of mouse Epcam.

**Storage**

Maintain refrigerated at 2-8°C for up to 2 weeks. For long term storage store at -20°C in small aliquots to prevent freeze-thaw cycles.

**Precautions**

(Mouse) Epcam Antibody (C-term) is for research use only and not for use in diagnostic or therapeutic procedures.

**(Mouse) Epcam Antibody (C-term) - Protein Information**

**Name** Epcam

**Synonyms** Tacstd1

### Function

May act as a physical homophilic interaction molecule between intestinal epithelial cells (IECs) and intraepithelial lymphocytes (IELs) at the mucosal epithelium for providing immunological barrier as a first line of defense against mucosal infection. Plays a role in embryonic stem cells proliferation and differentiation. Up-regulates the expression of FABP5, MYC and cyclins A and E (By similarity).

### Cellular Location

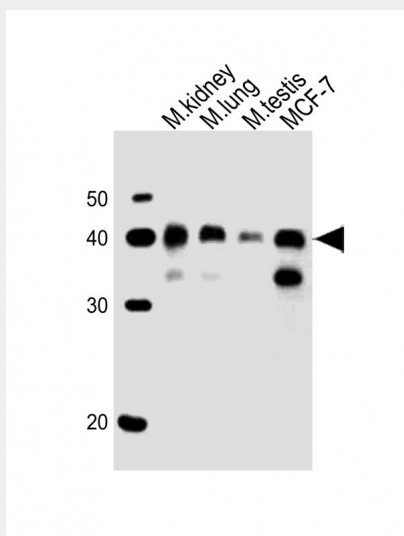
Lateral cell membrane {ECO:0000250|UniProtKB:P16422}; Single-pass type I membrane protein {ECO:0000250|UniProtKB:P16422}. Cell junction, tight junction {ECO:0000250|UniProtKB:P16422}. Note=Colocalizes with CLDN7 at the lateral cell membrane and tight junction {ECO:0000250|UniProtKB:P16422}

### (Mouse) Epcam Antibody (C-term) - Protocols

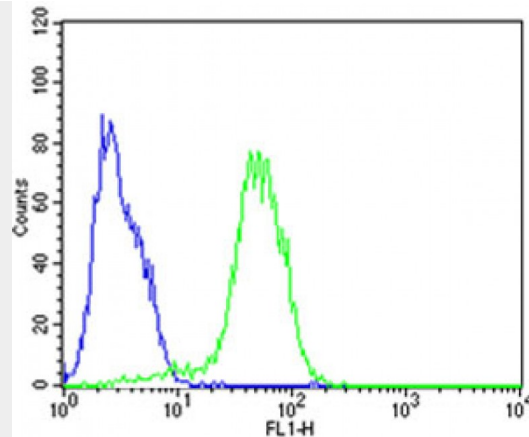
Provided below are standard protocols that you may find useful for product applications.

- [Western Blot](#)
- [Blocking Peptides](#)
- [Dot Blot](#)
- [Immunohistochemistry](#)
- [Immunofluorescence](#)
- [Immunoprecipitation](#)
- [Flow Cytometry](#)
- [Cell Culture](#)

### (Mouse) Epcam Antibody (C-term) - Images



All lanes : Anti-Epcam Antibody (C-term) at 1:1000 dilution Lane 1: mouse kidney lysates Lane 2: mouse lung lysates Lane 3: mouse testis lysates Lane 4: MCF-7 whole cell lysates Lysates/proteins at 20 µg per lane. Secondary Goat Anti-Rabbit IgG, (H+L), Peroxidase conjugated at 1/10000 dilution Predicted band size : 35 kDa Blocking/Dilution buffer: 5% NFDM/TBST.



Flow cytometric analysis of HepG2 cells using (Mouse) Epcam Antibody (C-term)(green, Cat#AW5495) compared to an isotype control of rabbit IgG(blue). AW5493 was diluted at 1:25 dilution. An Alexa Fluor® 488 goat anti-rabbit IgG at 1:400 dilution was used as the secondary antibody.

#### **(Mouse) Epcam Antibody (C-term) - Background**

May act as a physical homophilic interaction molecule between intestinal epithelial cells (IECs) and intraepithelial lymphocytes (IELs) at the mucosal epithelium for providing immunological barrier as a first line of defense against mucosal infection. Plays a role in embryonic stem cells proliferation and differentiation. Up-regulates the expression of FABP5, MYC and cyclins A and E (By similarity).

#### **(Mouse) Epcam Antibody (C-term) - References**

Bergsagel P.L.,et al.J. Immunol. 148:590-596(1992).  
Carninci P.,et al.Science 309:1559-1563(2005).